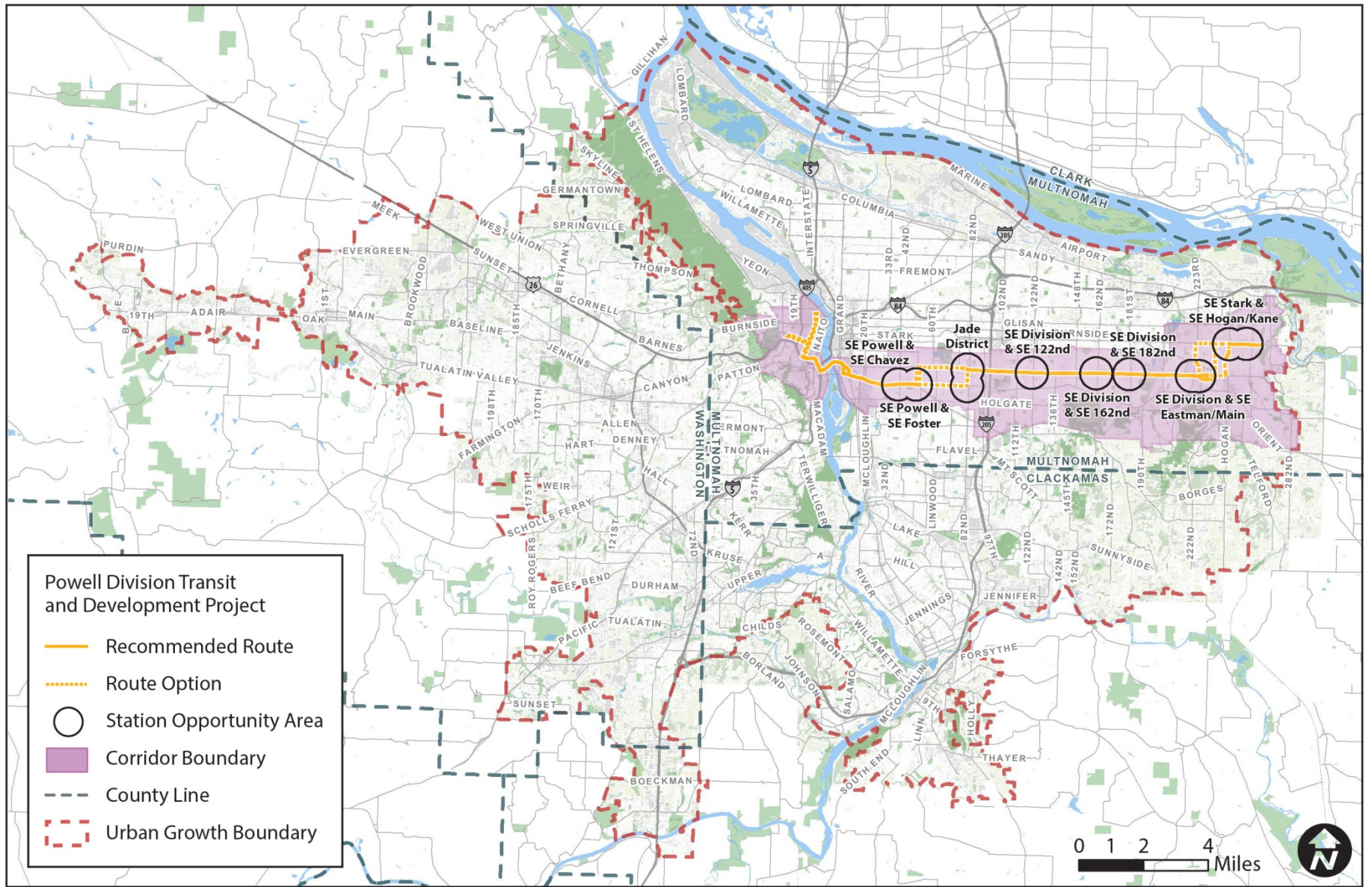




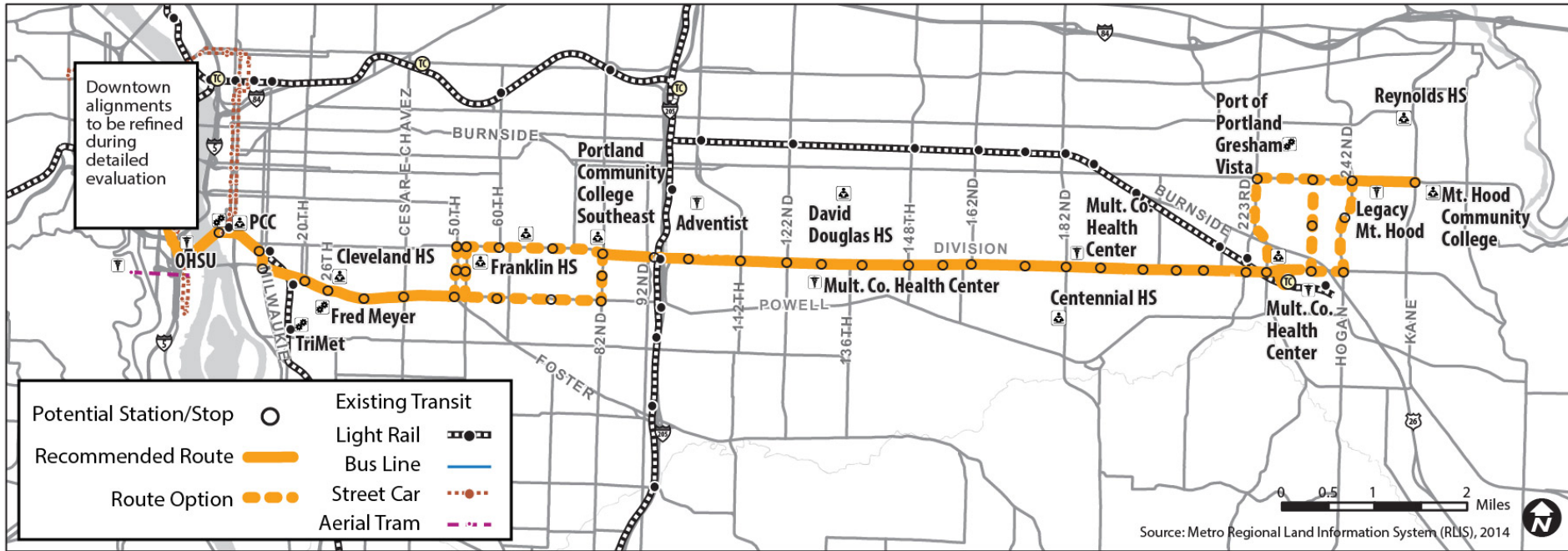
POWELL-DIVISION TRANSIT AND DEVELOPMENT PROJECT

Dana Lucero, Metro



05/29/2015

Bus rapid transit will connect communities in the two largest cities in the Portland region



- Very high transit ridership
- Connects high schools and higher education
- Most diverse part of Oregon
- Deep skepticism of government
- Need for public investments
- Concerns about gentrification, displacement and community stability

Community-driven decision making

- Modeled after East Metro Connections Plan, which resolved a 25-year land use dispute
- A first for transit planning in the Portland region
- Triple bottom line approach for membership

Empower

Collaborate

Involve

Consult

Inform



22-member Steering Committee

- Elected officials
- Agency leaders
- Educational institutions
- Housing advocates
- Health advocates
- Environmental justice advocates
- Communities of color
- Neighborhood associations
- Transit riders
- Business representatives
- Environmental advocates



Operating procedures

- Present public input on par with technical findings
- Hear directly from communities engaged
- Consensus-based decision-making allows for skepticism and provokes constructive participation



Hurdles to establishing community-based committee

- Identifying people and not the usual suspects
- Can't use a catch-all membership approach
- Skepticism based on past experiences, tactics



Challenges

- Not everyone has a seat at the table
- Capacity can be limited: time and engagement level



Challenges

- Not owner/operators, therefore do not need to balance this project against other priorities
- Decision-making role will end, creates need to win all you can



Benefits

- Capacity building for community members to engage in civic processes
- Capacity building for agencies to be more accessible



Benefits

- New values brought to bear in decision-making



Benefits

- Ability to engage more people
- Reduces politics in staff work



Metro next steps

- Powell-Division as a model
- Instituting ways to remove barriers, increase access to decision making



Thank you

Dana Lucero, Senior public involvement specialist
dana.lucero@oregonmetro.gov

www.oregonmetro.gov/powelldivision